

Why Construction Teams Choose ProjectManager



| Pain points in the construction industry

The construction industry makes up a significant portion of the U.S. economy with over 7.6 million employees. Annually, nearly \$1.4 trillion worth of construction builds is established in the United States. Studies point to a 3.6% growth rate yearly until 2030 which is faster than the manufacturing or services sectors. Despite this growth, many construction teams still need help to complete their projects effectively.

Here are some widespread pain points that construction teams experience:

- ✓ Miscommunication between owners, general contractors and subcontractors
- ✓ Poor transparency into time and resource usage
- ✓ Scheduling inefficiencies that can't accommodate change orders or delays
- ✓ Managing field tasks from the office
- ✓ Tracking actual data against the baseline

ProjectManager offers construction teams the flexible tools they need to keep up with the dynamic nature of construction projects to standardize processes and improve project delivery.

| ProjectManager's practical solutions for construction teams

- ✓ Create dynamic construction schedules with the best planning tool on the market
- ✓ Keep documents organized for better visibility and results
- ✓ Track time, project costs and resources for real-time visibility
- ✓ Leverage online dashboards and reports for fluid stakeholder management
- ✓ Identify project risks early to minimize delays

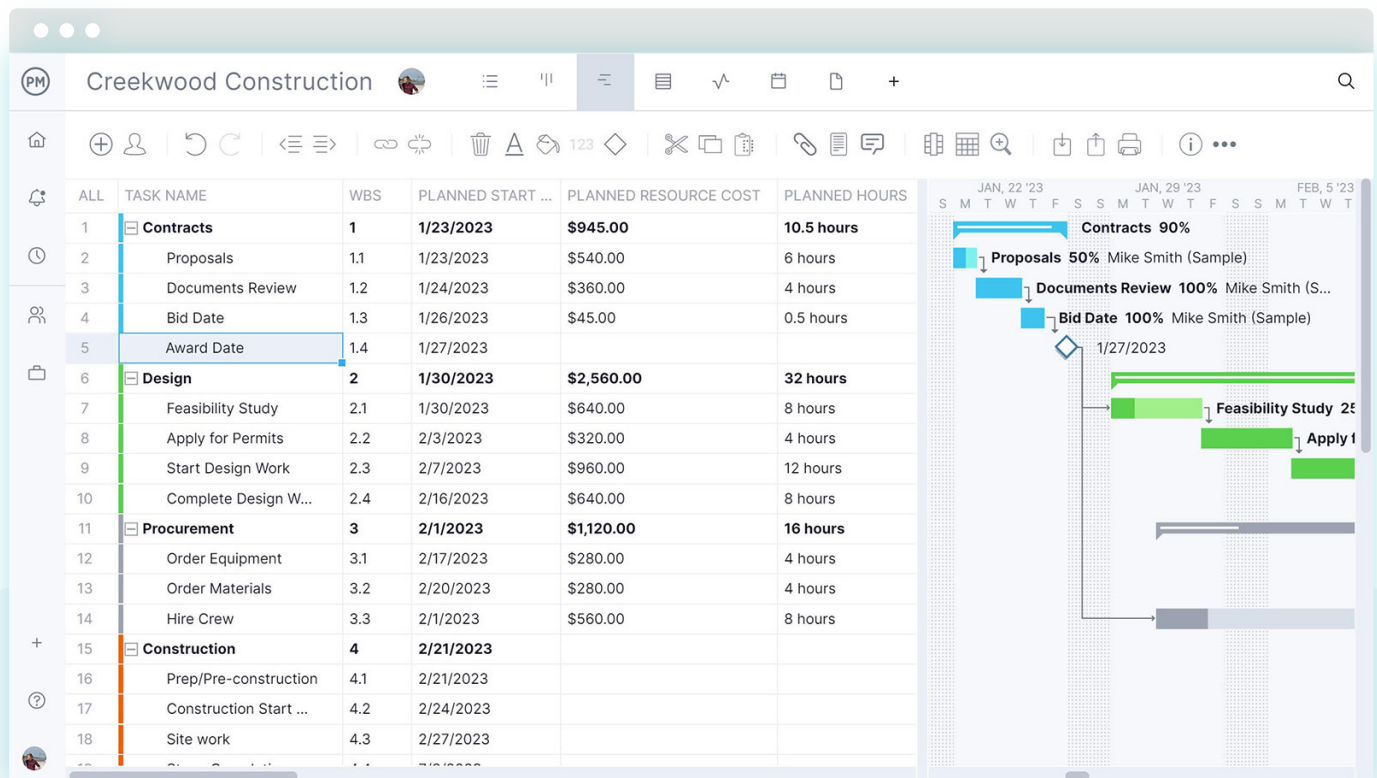


Our construction project management software has everything modern teams need to operate efficiently. From the office or on the worksite, teams can access ProjectManager anytime, anywhere.

Create dynamic construction schedules with the best planning tools on the market

Construction projects are notoriously difficult to manage due to their ever-changing nature. Even with a thorough plan, projects rarely go as expected. Stagnant supply changes, unexpected weather shifts or last-minute client requests can impact the schedule and scope. If the project manager doesn't have adaptable tools and an easy way to communicate changes, the project could quickly become derailed and use more resources than expected.

ProjectManager has flexible Gantt charts that can adapt to unexpected project changes. Use our Gantt chart to link dependencies, set baselines and track the crucial path. If there's an unexpected delay or materials don't arrive on time, simply drag and drop relevant dates on the Gantt chart and the team will be updated.



| Keep documents organized for better visibility and results

Employees, contractors and subcontractors may all be working on the same project from different locations. It can be challenging to sync on updates or share files that impact the project's evolution. Without a single source of information for project documents, it becomes nearly impossible to keep track of differences between the estimated budget and the actual costs.

ProjectManager provides one location to communicate, share documents and upload job site photos to stay organized. Regardless of how different project roles prefer to communicate, easy access to shared data helps ensure project quality.

Project View	Value	Use Case
Gantt	Manage tasks, dependencies and milestones	View task duration and important deadlines
Task List	Sort and manage projects and personal work	Create punch lists and pinpoint inefficiencies
Board	Move tasks through visual, defined workflows	Ensure work is meeting quality and compliance standards via sign-offs
Calendar	Plan for upcoming deadlines and organize schedules	Coordinate subcontractor schedules and timelines
Sheet	Analyze large amounts of project data in one place	Determine realistic timelines and reallocate resources

| Track time, project costs and resources for real-time visibility

To successfully complete a project, the project manager must keep close tabs on resources, but this can be challenging when projects take place across sites. Resources may include labor, equipment, funding or anything else required to complete a project. As suppliers and clients request changes, it's difficult to make relevant crew adjustments in a timely, visible manner. For example, if a client updates a deadline, the project manager might need to factor in hiring additional crew members to execute tasks across job sites.

Our resource-focused tools make it easy to monitor and make adjustments to the crew, materials, workload and more. Utilize our workload page to see the breakdown of the crew's time for a better understanding of who can take on what tasks.

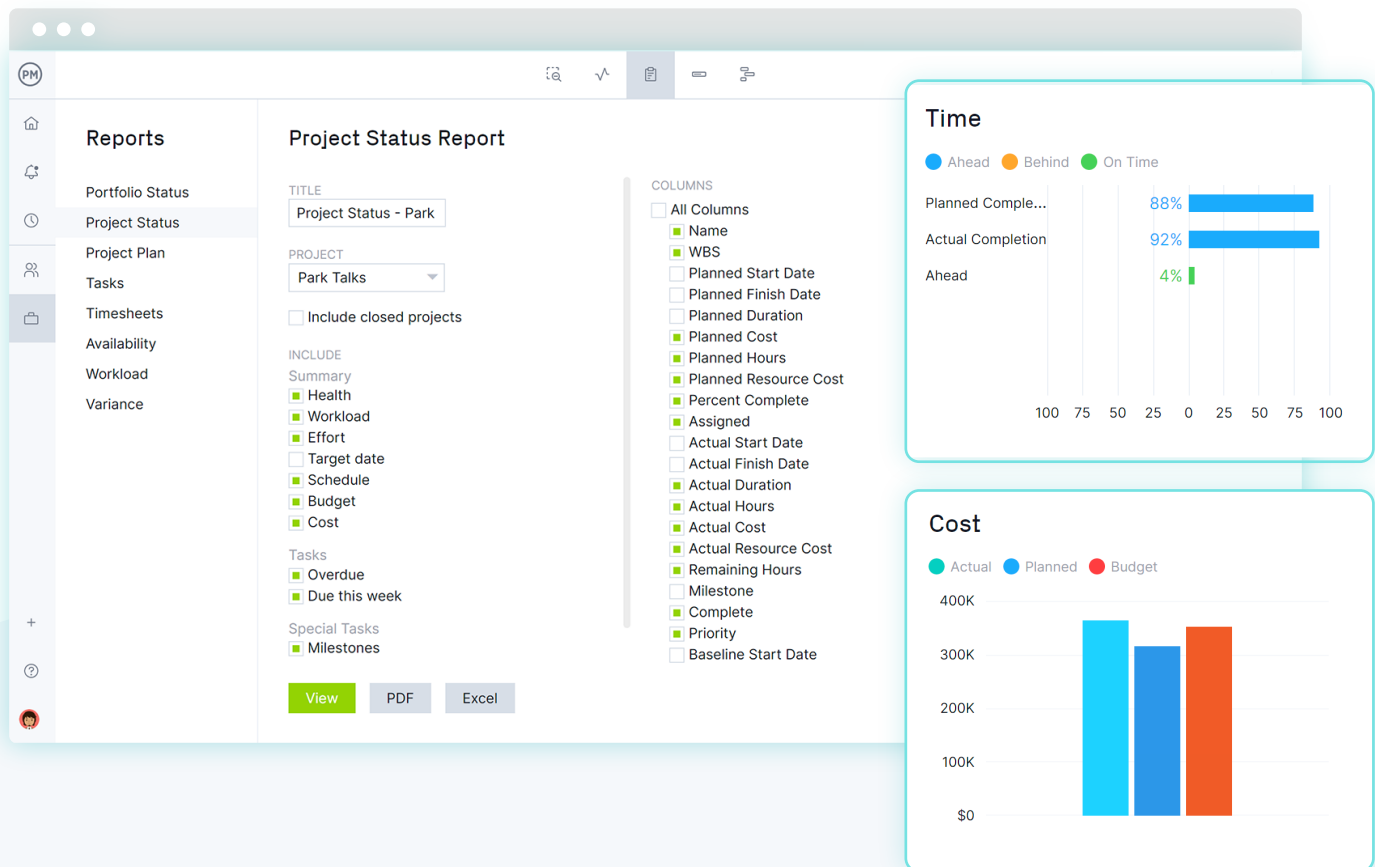
- ✓ Timesheets to monitor individual workloads and to gain a better understanding of contractor and subcontractor availability
- ✓ Roadmaps to plan the project portfolio or to oversee multiple projects at once
- ✓ Calendars and working days to outline team availability including time off and holidays

NAME	TEAMS	TASKS	
Adam Johnson	Product	18	...
Danny Jones	Technical	16	...
Jennifer Jones (...)		0	...
Jennifer Murphey	Administrative	17	...
Joe Johnson	Technical	11	...
Mike Smith (Sam...)		0	...
Monica Corrigan	Administrative	15	...
Natalie Waters	Design	13	...
Rachel Covington	Design	9	...
Sam Watson (Sa...)		0	...
Stenhanie Foster	Design	21	...

Leverage online dashboards and reports for fluid stakeholder management

One constant across construction projects is change. As soon as changes occur, whether it's a change in budget, materials or labor, stakeholders need to be updated. If they're not looped in, it could result in unforeseen expenses and delayed deliverables. This means that tracking activities is pivotal to successful construction projects.

ProjectManager makes it easy to keep stakeholders informed of changes through real-time project tracking. Use dashboards and one-click reports to analyze project data and share it with general contractors and subcontractors. Attach our downloadable, customizable reports on project status, portfolio status, workload, timesheets and more so everything is in one location. If needed, use guest licenses to share pertinent information with relevant parties without using a software license.



Identify project risks early to minimize delays

There's a large amount of risk in any construction project. With so many moving parts across job sites, even one small misstep or supply chain delay can significantly slow down a project's successful completion.

The ability to flag and track risks in a centralized location allows construction teams to spot issues before they sink the project. ProjectManager's risk view allows teams to create and track risks, setting the impact and likelihood. This automatically populates the risk matrix and makes it clear how to move forward. If action is needed, assign the risk to the desired team member so they can take action.

The screenshot displays the ProjectManager interface for a project named "Creekwood Construction". On the left, a sidebar lists several risks under the "CLOSED" status, including "Outdated password manager", "Supplier Delay", "Resource availability restriction", "External stakeholder roadblock", "Estimation risk", and "New vendor risk". The main view shows a detailed view of the "Outdated password manager" risk, which is currently "Open". The risk is categorized as "Critical" and is associated with the "IT" and "Security" tags. The description states: "Need to consolidate our password managers into an up-to-date solution that fits everyone's needs". The resolution is "Vetted 3 possible options. See document attached". The risk level is "High", indicated by a red arc. The interface also shows a comments section with two entries from Bill Malsam, one mentioning Peter Landau and another providing a list of password managers. A document attachment titled "password manag." is also visible.

| Customer Testimonials



“The implementation of ProjectManager, from day one, was the easiest implementation I’ve ever dealt with. That includes Oracle, Microsoft, Adobe, pick a name. It was the simplest product I ever worked with with robust capabilities.”

Mark Klady

Director of Operations at Lighthenco



“ProjectManager is just brilliant for us to record all of our hours and have it all in one spot.”

Justin Smith

Director & Sr. Construction Engineer at Construc



“I get central information to schedule our people, share those schedules, comment and update them, too. Plus, our bill of procurement, delivery information, electrician and key contact for clients are all in one spot.”

Mark Klady

Director of Operations at Lighthenco

Ready to try **ProjectManager**
for yourself?

[Start Free Trial](#)

Want to talk to our expert
sales team?

[Contact Us](#)

